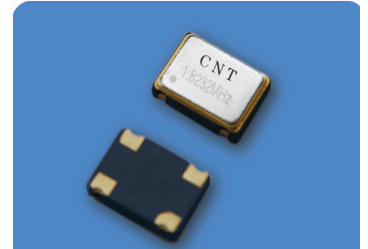




CMOS/TTL SMD CRYSTAL CLOCK OSCILLATOR 5.0×3.2

FEATURES

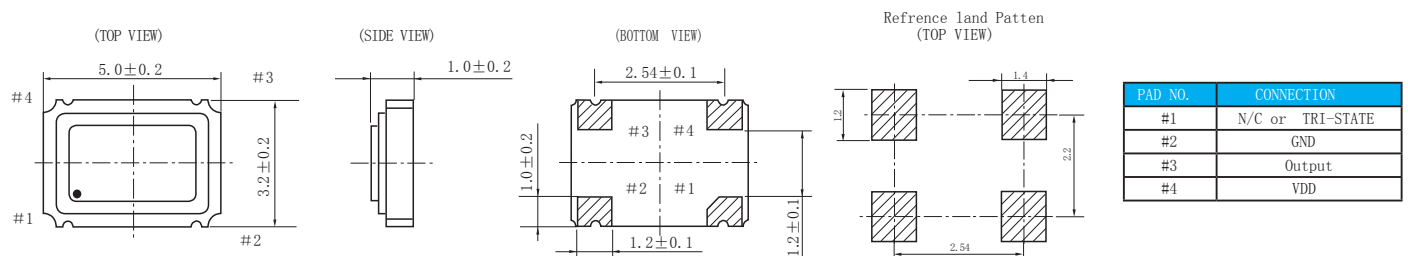
- Ultra-miniature package
- Reflow soldering
- CMOS IC circuit construction built-in with tristate function
- CMOS/TTL compatible in general application
- SPECIFICATIONS



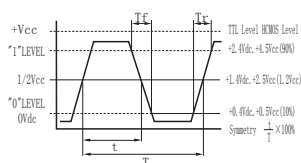
SPECIFICATIONS

ITEM	DESCRIPTION	
Frequency range	1.000MHz~125MHz	
Mode	TTL, CMOS or CMOS/TTL COMPATIBLE	
Supply Voltage(VDD)	5.0V DC±10%、3.3V DC±10%、2.5V DC±10%、1.8V DC±10%	
Supply Current	≤30MHz 30mA Max, >30MHz 45mA Max	
Operating Temperature Range	0°C~+70°C、-20°C~+70°C、-40°C~+85°C or specify	
Frequency Stability Over Operating Temp Characteristics	±30ppm(STD)、±5ppm ~ ±50ppm or specify	
Storage Temperature Range	-55°C ~ +125°C	
Output Character	"0"Level (Vol Max)	10%VDD MAX
	"1"Level (Voh Min)	90%VDD MIN
	Rise Time (Tr)	10% 90%VDD 10ns Max
	Fall Time (Tf)	90% 10%VDD 10ns Max
	Symmetry	40% 60% or 45% 55% Option (at 50%VDD)
Output Load	15pf、30pf、50pf Max or specify	
Start Up Time	7~10ms Max	
Aging (25°C±3°C)	±3ppm/year	
E/D Control	#1PIN N/C or TRI-STATE	

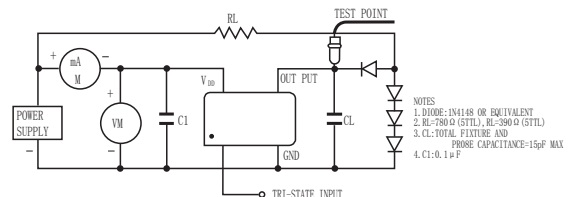
OUTLINE DIMENSIONS (mm)



OUTPUT WAVEFORM



TEST CIRCUIT



PART NUMBER

TIM-	XOS5032	A	16.000000	±30	-20°C~+70°C	5.0	N
Type	Molde Type	Frequency (MHz)	Frequency (MHz)	operating stability (ppm)	operating temperature range	Supply voltage(v)	E/D Control
	A: CMOS/TTL	16.000000:				5.0:5.0V DC	Y: TRI-STATE
	B: CMOS	16.000000MHz		±30: ±30ppm		3.3:3.3V DC	N: N/C Control
	C: TTL					2.5:2.5V DC	