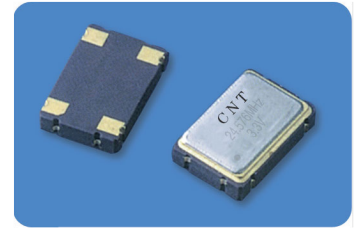




CMOS/TTL SMD CRYSTAL CLOCK OSCILLATOR 7.0×5.0

FEATURES

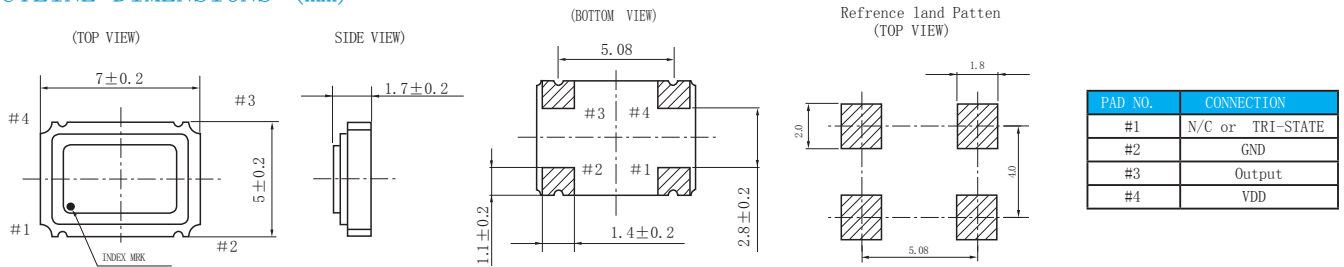
- Miniature package
- Reflow soldering
- CMOS IC circuit construction built-in with tristate function
- CMOS/TTL compatible in general application



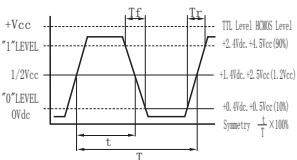
SPECIFICATIONS

ITEM	DESCRIPTION	
Frequency range	1.500MHz~150.000MHz	
Mode	TTL, CMOS or CMOS/TTL COMPATIBLE	
Supply Voltage(VDD)	5.0V DC±10%, 3.3V DC±10%, 1.8VDC±10%	
Supply Current	≤30MHz 30mA Max, >30MHz 45mA Max	
Operating Temperature Range	0°C~+70°C, -20°C~+70°C, -40°C~+85°C or specify	
Frequency Stability Over Operating Temp Characteristics	±30ppm(STD), ±5ppm ~ ±50ppm or specify	
Storage Temperature Range	-55°C ~ +125°C	
Output Character	"0"Level (Vol Max)	10%VDD MAX
	"1"Level (Voh Min)	90%VDD MIN
	Rise Time (Tr)	10%~90%VDD 10ns Max
	Fall Time (Tf)	90%~10%VDD 10ns Max
	Symmetry	40%~60% or 45%~55% Option (at 50%VDD)
	Output Load	15pf, 30pf, 50pf Max or specify
Start Up Time	7~10ms Max	
Aging (25°C±3°C)	±3ppm/year	
E/D Control	#1PIN N/C or TRI-STATE	

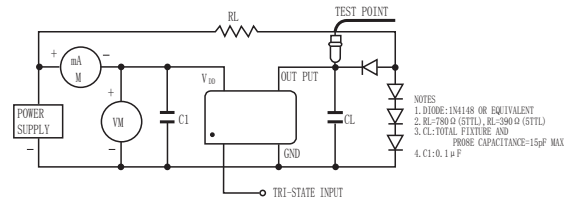
OUTLINE DIMENSIONS (mm)



OUTPUT WAVEFORM



TEST CIRCUIT



PART NUMBER

TIM-	XOS7050	A	16.000000	±30	-20°C~+70°C	5.0	Y
Type	Molde Type	Frequency (MHz)	Frequency (MHz)	operating stability (ppm)	temperature range	Supply voltage (v)	E/D Control
	A: CMOS/TTL	16.000000:				5.0: 5.0V DC	Y: TRI-STATE
	B: CMOS	16.000000MHz	±30: ±30ppm			3.3: 3.3V DC	N: N/C Control
	C: TTL					1.8: 1.8V DC	